

NP-201 Series

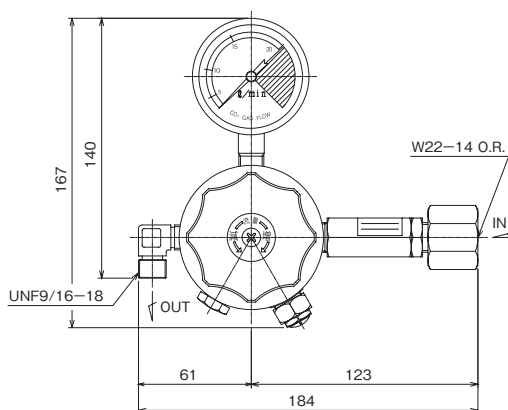
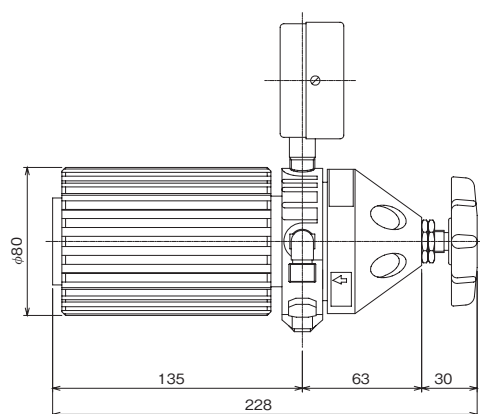
For Cylinder, No Heater type Carbon Dioxide Pressure Regulator

Specifications

Applicable gas	MAG, Ar, CO ₂	Flow Range	5 ~ 20L/min (CO ₂)
Inlet Pressure	Ar, MAG : 14.8MPa or less CO ₂ : 12MPa or less	Inlet Connection	W22-14 O.R.
Outlet Pressure	0 ~ 0.2MPa	Outlet Connection	UNF9/16-18 male
Flowmeter	Bourdon tube flowmeter	Accessories	Gasket Packing(Fiber)×2Pcs.
		Approximate Weight	3.0kg



Outline drawing



[Note]
■ Unit: mm
■ Dimensions are subject to change without notice.

Materials of construction

Body	C3771BE
Bonnet	ADC12
Fin cover	A6063S-T5
Poppet	C3604BD
Seat	PTFE
Diaphragm	Phosphor bronze
Safety valve seat	NBR

List of specifications

Series	Flowmeter L/min	Inlet Connection	Outlet Connection
NP-201	20	W22(R)	Hose Nipple 8.5mm
	20	W22(R)	UNF9/16-18
	20	W22(R)	Rc1/4